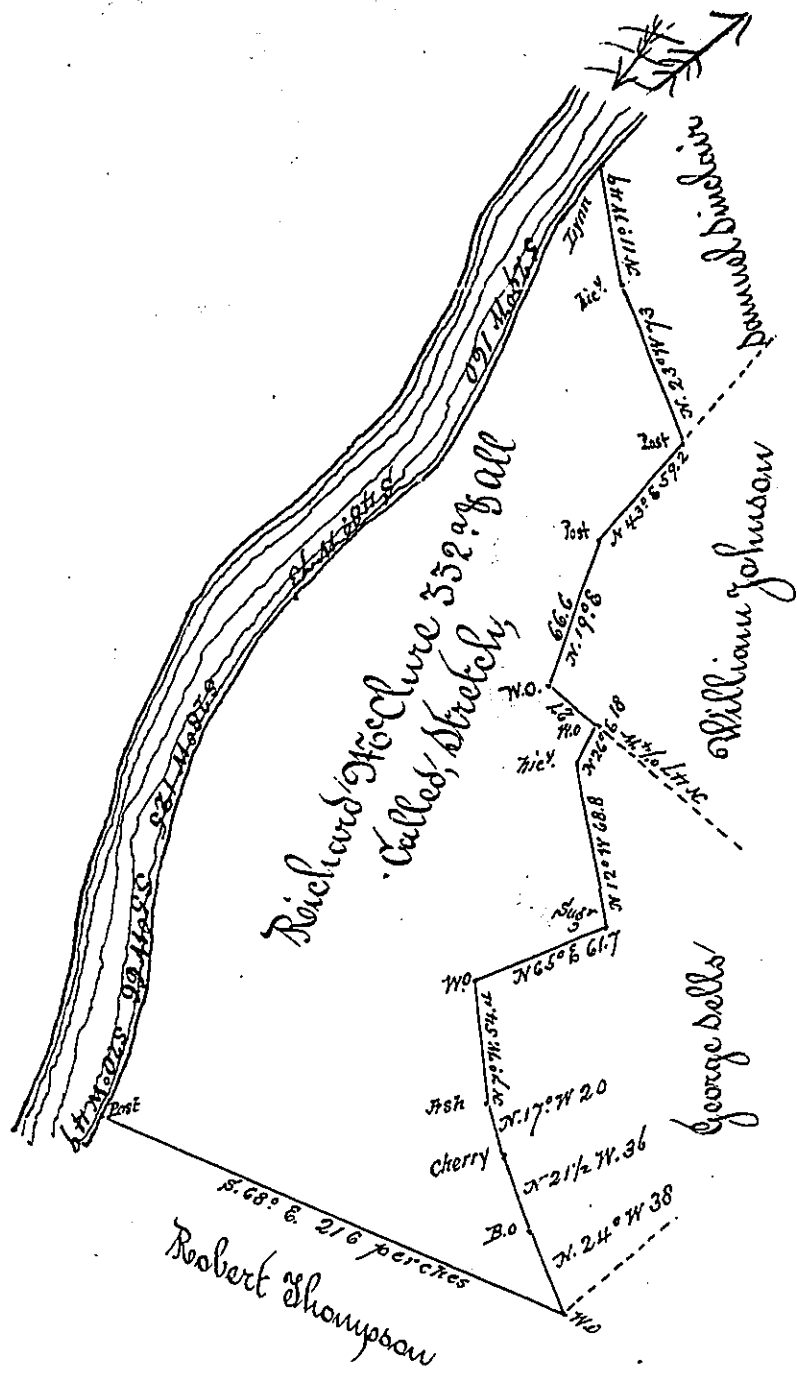


49  
66  
125  
73  
160  
Total 473 Doon  
River



Situated on the East Side of Honongahela River above the forks of Foughiogeri and Honongahela in Rostraver Township ~~Franklin County~~ Westmoreland County and surveyed the 17th day of November 1787. In pursuance of a Warrant dated the 17th day of August 1784.

To John Lukens Esquire  
Surveyor General

Per Alexander McClean Deputy

IN TESTIMONY that the above is a copy of the original remaining on file in the Department of Internal Affairs of Pennsylvania, made conformably to an Act of Assembly approved the 16th day of February, 1833, I have hereunto set my Hand and caused the Seal of said Department to be affixed at Harrisburg, this fourth day of September, 1900.

*James M. Pitt*  
Secretary of Internal Affairs.